



August 2023

**Friends of Lake Eau Claire
Lake Eau Claire Association, Inc.**

P.O. Box 229

Augusta, WI 54722

www.lakeeauclaire.org

PRESIDENT'S NOTE

By Lori Bechtel

Hello Lake Eau Claire Supporters!

Summer is sure flying by fast, but we have had a beautiful summer thus far. It has been great to see so many people out and about on the lake this summer. There has been a lot of fishing activity and recreational activity, which I love to see. I remember fondly, all of the good times that I had on Lake Eau Claire as a teenager and I love seeing that it is still enjoyed by so many, including myself.

Friends of Lake Eau Claire have been busy these past couple of months working hard on annual fundraisers. I'm happy to report that our calendar raffle just finished up and we are now drawing the names all during the month of August. We also had a successful, fun golf fundraiser at Hickory Hills in July. The event was again organized by Leann Balliett and we can't thank her and all of the volunteers enough.

We have also been busy recruiting our annual sponsors and I'm pleased to report that we gained ten new Muskie sponsors this year. Thank you so much to ALL of our sponsors! You will see all of our Muskie sponsor logo's located throughout this newsletter and you will see more information about each on our Facebook posts. If you don't follow our Facebook page, please do!

We are now looking forward to our annual picnic which is scheduled for Saturday, August 19th to be held at the pavilion at the Eau Claire County Park located on County Road SD. The clubhouse is under renovation so we will be located in the outdoor pavilion. The Lake District's annual meeting will be at the same location and will start at 2:00 pm that day with our social time to follow immediately after that meeting wraps up. We will then have a catered meal and a brief annual meeting. We are trying something new this year! All beverages are being donated and the meal will be provided free of charge by Friends of Lake Eau Claire. We thought this would be a great way to say thank you for all of your generous support this past year and always. Please plan to attend this fun afternoon event.

I hope to see you all at the picnic and thank you for taking the time to read our newsletter and for always supporting our efforts.



Thank you to the businesses below for being a 2023-2024 sponsor! Please show your support by patronizing these businesses!

Muskie Sponsors (\$300+)

- Bush's Bean, Augusta
- Air Diffusion Systems, Illinois
- Al Berry & Sons Trucking, Augusta
- The Woodland, Augusta
- Ries Custom Homes, Augusta
- Lake Eau Claire Fisheree, Augusta
- Park Ridge Distributing, Eau Claire
- Subway, Augusta
- Hello Adorn Jewelry, Eau Claire
- Mike's Buckhorn, Augusta
- Phil's Septic, Augusta
- Edina Realty, Courtney Kneifl, Eau Claire
- Alternative Resource Management, Eau Claire
- Maug Cleaning Service, Eau Claire
- HomeCarePlus, Cottage Grove, MN
- Stensen Excavating, Augusta
- Astrea Internet, Augusta
- VFW Post 8752, Cottage Grove, MN
- WHTL Radio, Whitehall
- Apex Insurance, Augusta
- Zimmerman Justice, River Falls
- Sandy Hill Campground, Augusta
- Club's Choice Fundraising, Eau Claire
- K&M Landscaping, Eau Claire
- Senn Blacktop, Chippewa
- Schuman Cheese, Fall Creek
- Remax - Julie Brown, Eau Claire
- Lakes Gas, Eau Claire
- Augusta Feed Service, Augusta
- VFW Auxiliary, Cottage Grove, MN
- Midwest Select, Eau Claire
- Kinderman Plumbing, Fall Creek
- Chilson Automotive, Cadott, Augusta, Chippewa
- American Waterworks, Augusta
- Lance's Fresh Market, Augusta
- Allegra/Image 360, Eau Claire
- Ross Street Roasting, Augusta
- Badger Basement Systems
- 2nd Amendment Properties, Augusta

Northern Sponsors (\$200)

- Unity Bank, Augusta
- Travis Electric, Augusta

Walleye Sponsors (\$100)

- Harvest Moon Pub & Eatery, Augusta
- Co-Op Credit Union, Fall Creek
- A&D Docks, Cornell
- Eau Claire Electric, Eau Claire
- Fisherman Fred's Guide Service, Augusta





High-speed Internet, TV and Phone for people who choose small-town living.

800-236-8434 | astreaconnect.com



Are you able to identify Wisconsin's game fish?

GAME FISH OF WISCONSIN



Identification Key

- 1 Muskellunge
- 2 Largemouth bass
- 3 Smallmouth bass
- 4 Northern pike
- 5 Warmouth
- 6 Pumpkinseed
- 7 White crappie
- 8 Walleye
- 9 Bluegill
- 10 Rock bass
- 11 Green sunfish
- 12 Sauger
- 13 Yellow perch
- 14 White bass
- 15 Black crappie
- 16 Shovelnose sturgeon
- 17 Flathead catfish
- 18 Channel catfish
- 19 Lake sturgeon
- 20 Lake trout
- 21 Brown trout (Great Lakes)
- 22 Chinook salmon
- 23 Rainbow trout
- 24 Brown trout
- 25 Coho salmon
- 26 Steelhead
- 27 Brook trout

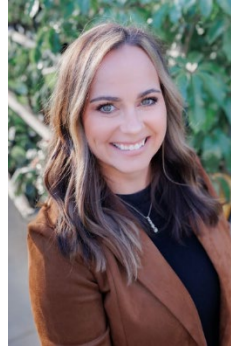


THANK YOU TO OUR BRAND NEW MUSKIE SPONSORS THIS YEAR!

ZIMMERMAN JUSTICE

715.425.1700

YOUR VOICE IN THE COURTROOM



EdinaRealty

a Berkshire Hathaway affiliate

Courtney Kneifl

Realtor®

Cell: 715-379-3568

1903 Keith St. #6

Eau Claire, WI 54701

CourtneyKneifl@edinarealty.com



Jason Phillips

Cell: 715-577-3959 * Office: 715-318-3454

www.ms-ig.com



EAU CLAIRE • CHIPPEWA FALLS • CADOTT

www.CHILSONMOTORS.com



Kinderman Plumbing



Employers May Match Funds

You may not be aware that **MANY** employers will match donations that their employees make to non-profit organizations, or they may offer cash donations in lieu of employee volunteering hours to a designated non-profit organization. Recently, one of our supporters of Lake Eau Claire did just that! They participated in an employee volunteerism program and their employer donated \$500 to the Friends of Lake Eau Claire!

Support like this is just fantastic! Thank you to Doug & Connie Wylie for your donation through your employer!

This might be a great time to check with your employer to see if your company does something similar. We truly appreciate all donations, and you can always be assured that the funds received will be put to good use on Lake Eau Claire!



You may have seen or heard that the Clubhouse is getting torn down.

(Recently featured on WQOW) - Why is the clubhouse at the county park near Augusta getting torn down?

After standing for more than 80 years, parts of the clubhouse at Lake Eau Claire County Park are getting torn down for what officials say will be a bigger and better structure.

Due to safety concerns, the clubhouse's old structure will be replaced with an open-air pavilion.

According to Eau Claire County Parks and Forest Director Josh Pedersen, the old clubhouse struggled with mold, mildew, and rodents. He said the new pavilion will keep the historical feel of the old building because they plan on keeping the steel structure and chimney. Some demo work has already been completed... along with removal of interior ductwork, lighting and wiring. Pedersen added the open-air pavilion will be a unique addition to the Chippewa Valley that everyone can enjoy.

"We anticipate that there will be a lot of weddings here, many family reunions, reunions in the park and music events can certainly happen here in this structure. It's a beautiful setting and backdrop, so it's perfect for any type of event," said Pedersen.

The open-air pavilion project was approved as part of the 2023 county budget and is estimated to cost approximately \$180,000. County Park officials say people will be able to enjoy the remodeled structure next summer. In the future, Pedersen said the county plans to build a new, climate-controlled clubhouse next to the pavilion. However, that won't be built for another few years.

2023 ANNUAL PICNIC

Our annual picnic will coincide with the annual Lake District meeting. We really hope to see you there!

WHAT: Lake Eau Claire District Meeting starting at 2:00pm followed by the Lake Association Social, Picnic & Annual Meeting

WHERE: The Pavilion at the County Park on SD (clubhouse is under renovations)

WHEN: Saturday, August 19th –

- 2:00PM Lake District Annual Meeting
- Social time – Immediately following district meeting (approx. 3pm)
- Picnic Dinner – 5:00 pm
- Lake Association Annual Meeting



COST: FREE OF CHARGE FOR 2023

RESERVATIONS: None needed but feel free to email lakeecassociation@gmail.com to let us know you are coming so we can plan food accordingly.

MENU: Summer Picnic Meal being catered by Tugger's Brian's & Trisha's Café & Catering



Membership Mailing

If you haven't had a chance to renew your 2023 membership to the Friends of Lake Eau Claire organization, be on the lookout for a membership mailing. If you want to beat the rush, send in your \$25 membership fee now using the form at the end of this newsletter or use this link to renew: <https://www.memberplanet.com/lakeeauclaireassociation>

Thank you for your support!



4th of July Fireworks Postponed!

Mark your calendars!

The fireworks over Lake Eau Claire will now be held at dusk on Saturday, September 2ⁿ.

As you know, we had inclement weather on the 4th of July, so the fireworks show was postponed. It will now be held the Saturday of Labor Day weekend. We apologize for the inconvenience and disappointment this may have caused!

We are now accepting donations for the 2024 fireworks show. Remember, the fireworks show is 100% funded by donations our members make.

Please consider making a donation to the Lake Eau Claire Association Fireworks Fund and then join us for a great show. Also encourage Friends and Family who attend our annual fireworks show to consider a donation as well!

Donate today at: <https://www.memberplanet.com/campaign/lakeeauclaireassociation/fireworks2024>

A STORY WE SHOULD BE WATCHING CLOSELY!

Click on the link below for the story that appeared on WQOW June 15th and to read the criminal complaint.

Inactive landfill owner facing polluting charges, accused of dumping in Sixmile Creek

A Milwaukee area man who owns an inactive landfill in the Town of Washington was seen on several occasions by DNR wardens pumping what they believe is contaminated liquid from the landfill into Six Mile Creek. Six Mile Creek joins the Eau Claire River near the powerlines where we dredge the sand trap at the Peaceful Canoe Boat Landing. From there, water flows just over a mile into Lake Altoona.

As yet, the DNR nor local health officials know the extent of the environmental damage this may have caused. From recent sampling of nearby wells, the DNR does not believe the contaminants reached the ground water, which supplies many area homeowners' water wells. However, the DNR suggests nearby residents should get their well water tested for heavy metals and PFAS.

Because of irregularities found in records dating back to 2015, DNR investigators visited the site in 2020 and witnessed the alleged illegal dumping on several occasions. The DNR believes the landfill owner was dumping contaminants for five years, from 2015 to 2020, resulting in the illegal disposal of millions of gallons of pollutant flowing into Lake Altoona. The contaminant, called leachate, is required by DNR regulation to be transported to a waste treatment facility for disposal. Calculations from waste disposal records prior to 2015 indicate there are 2 ½ million gallons of leachate that is unaccounted for. "That is the question, and that is the concern" according to the DNR. The scale of the alleged crime and the enormity of its potential impact, according to the DNR, "is a very big deal."

Kids have been swimming in this stuff, and no one knew it. You may have eaten fish that were living in it and didn't know it. Now you do.

https://www.wqow.com/news/crime/inactive-landfill-owner-facing-polluting-charges-accused-of-dumping-in-sixmile-creek/article_232bdcf2-0bbe-11ee-89c6-1bbc7dd8eb7b.html



Air Diffusion Systems

A John Hinde Company
3964 Grove Avenue
Gurnee, Illinois 60031 USA

Phone: 847-782-0044 Fax: 847-782-0055

www.airdiffusion.com

Boat Parade Recap!

By Chris Nelson

Good News Scalawags on the fresh water high seas of Lake Eau Claire. This 4th of July was the 35th running of the Pirate Regatta and we had 21 craft entered, which isn't bad considering the 4th was on a Tuesday. And we were really lucky the weather held off long enough for us to have smooth sailing.

And we're tipping our hats and lifting our eye patches because we really had some creative themes this year, but while there was lots of greatness out there, the judges had to choose. The winner for the Frigate (pontoon) division was Augusta Monopoly, piloted by Tammy Andries and her crew. Coming in a close second was the Barbie pontoon, designed by Johannes & Wolf. Third place went to Mario Mushroom pontoon, designed by the Bechtel family.

Honorable mentions went to Blaze Brigade, designed by Angel Zimmerman and the Blue Bubble pontoon, piloted by Dan Essinger.

In the Schooner (boat) division Chris Feller and family continued their dominance, winning with a 'Liberty and Justice on Lake Eau Claire' theme. I think they've won it 7 years in a row. Coming in second and third were both patriotic themed but didn't come to the island.

We'd like to thank the sponsors of the event: The Woodland Store, the Lake Eau Claire Association, Harvest Moon Pub & Eatery, and Doyle and Nelson Properties.

Thanks to everyone that participated and start working on your themes for next year's 36th Annual Pirate Regatta.



Calendar Winner Drawings – started August 1st.

Lake District Annual Meeting – 2:00 pm Saturday, August 19, 2023

Friends of Lake Eau Claire Annual Meeting & Picnic – Immediately following Lake District meeting Saturday, August 19, 2023

Fireworks over Lake Eau Claire – Saturday, September 2, 2023

Friends of Lake Eau Claire Board of Directors

Did you know that the Friends of Lake Eau Claire board is made up of 12-15 directors from the surrounding lake and local community? We thought it might be nice to introduce you to our board of directors over the course of the year in our newsletters. Each newsletter will feature some of our directors. Currently we have 13 directors. We appreciate all of the time and effort each director puts into different aspects of the managing of our association. A lot of the work that is done goes unseen but can be quite substantial. We thank them all for their efforts!

Angel Zimmerman – My name is Angel Zimmerman, and my Lake Eau Claire memories go back decades. As a teenager, I spent countless hours enjoying this wonderful lake. Water Skiing, boating and hanging out with my Augusta friends. My husband and I first purchased on the lake in 2005 on the southside. We would later buy on the northside, where we are today. We built new on the lot in 2019 where I can share the wonderful Lake Eau Claire experience with my kids and grandkids. I want to preserve this precious resource for not just my family, but all those that enjoy Lake Eau Claire.

Kim LaLonde - Hi! I'm Kim LaLonde. My husband, John, and I have 4 wonderful children together- two boys here and two adult daughters living in Texas. I grew up on the other side of Wisconsin but spent almost every holiday on the calendar visiting family in Augusta and Osseo. My dad, Steve Hoyme, and my mom, Annetta (Hoff) Hultman both grew up in Augusta, so I have many relatives here! We were blessed to make the transition from Texas to the lake about 4 years ago as we cared for my dad. Since moving here, we've met so many terrific friends. We love life on the lake and are grateful to call this our home.

Duane Ives - My name is Duane Ives and I have been a member of the Friends of Lake Eau Claire Board for the past 7 years. My wife (Trisha) and I purchased our cabin on Greens Landing (south side) in 2015 and during the spring/summer of 2021, we tore it down and built our forever home. During our free time, we love fishing and spending time on the water with our lake friends. In addition to the lake association board, I also serve on the Bridge Creek town board, School District of Augusta Board of Education and manage the Augusta Athletics' Baseball Team. Oh, and during the day, I work in the 'cloud' at Amazon Web Services. Did I mention I like to stay busy! Lake Eau Claire is a special place and we've done an amazing job improving water quality and fish population. Our work isn't done, and I'd encourage everyone to find a way to get engaged with lake activities. From building fish cribs, to organizing events or helping with fundraising, there is something for everyone! I hope you're able to join us at our lake picnic to mingle and meet your fellow lake enthusiasts!

Augusta Area Historical Society

The Augusta Area Historical Society seeks to highlight the people, places, and events of our area. An important and visible vestige of our past is Lake Eau Claire. Through the efforts of many people, a state historical marker commemorates the dam and the lake it created.

The Society is putting together a program and display chronicling Lake Eau Claire and the WPA project in Wisconsin. We are reaching out for old photographs and other historical documentation associated with the area before, during and after construction. Any photos and artifacts will be carefully reproduced and returned. We will also attribute the sources of any materials used. Many of you have donated items in the past. The Augusta Historical Society is aware of them, and they are being archived at the Augusta City Hall.

Please contact Kati Warner at the Augusta Library or the Augusta Historical Society at augustaareahistoricalsociety20@gmail.com or Randy Stutzman rlstutzman@aol.com for further information or if you have items to share.

Augusta Feed Company

DEADLY DUET

By Fred Poss

So, it's the middle of summer--the water is warm and green, the afternoons are too darn hot to be outside, and your boat is full of rainwater from the storms most evenings. What's a fisherman to do?

Adapt and adjust--that's what good fishermen always do, and this month's column provides two excellent baits that will help you make the changes you need to catch fish in midsummer conditions.

Both baits discussed here primarily are appropriate for river fishing in some kind of rock and current environment.

First, there is a crankbait recently introduced by Rapala. It's named the **OG ROCCO** and I fish it **in a number 5 size**. The bait was actually designed and built by Ott Defoe in his garage. It has a specially engineered square lip that nicely deflects off rocks and snags. As the bait is a floater at rest, this bait will unhook itself many times if you just give the line slack. Choose your favorite color, but make sure you include red for smallmouth bass and perch green/chartreuse for walleye.

And next is a bait by Berkley called **The Money Badger**. It comes in three sizes: 1/3 oz., 1/4 oz., and 1/5 oz. I prefer the 1/3 oz most of the time. Good colors include Black Gold and Perch. Again, this bait I really like this plug as it can be reeled in fast and still remain true to its track. These baits are most effective if you pause the retrieve a few times and let the bait slowly float up.

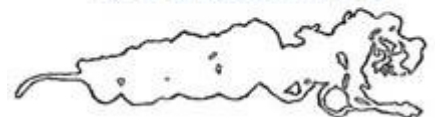
Willing to give these baits a try? Make sure you use monofilament or flourocarbon line because they have some stretch to absorb the hard strikes you get. I use 12 lb. FloroClear made by PLine. **Catch you later.**

 **Park Ridge Distributing, Inc.**

Locally Owned & Operated Since 1946



Lake Eau Claire
Ice Fisheree



NATIVE PLANTINGS



MAINTENANCE

COSTS

- Range: \$480 – \$2400
(average = \$1140)
- Healthy Lakes & Rivers grant funding available: \$1000 per 350 ft² area

MATERIALS

- Black plastic or herbicide
- Native plants
- Bulb auger or hand trowel
- Mulch
- Watering equipment



POSSIBLY REQUIRED

(if using herbicides in or adjacent to the water's edge)



Beaver Dam Lake, Dodge County - Bill Foley

NATIVE PLANTINGS, a transition zone best practice, are template planting plans designed for a contiguous area of at least 350 ft². Each template has a corresponding list of native plants suited to the given soil conditions and function of the plan, including lakeshore, bird/butterfly habitat, woodland, low-growing, deer resistant, and bare soil area plantings.

PURPOSE

Native plantings improve wildlife habitat, slow runoff water, and promote natural beauty. Each template described above serves all of these functions to some degree, but one may be better than another given your property's unique site characteristics and areas of concern. For example, the bird/butterfly template includes flowers that attract these types of wildlife.

HOW TO BUILD

It may be necessary to work with your local land and water conservation department or a landscaper to design and/or install these plantings. Check with your local zoning department to determine if any permits are necessary. Planting specifications and densities follow [Wisconsin Biology Technical Note 1: Shoreland Habitat](#).

Detailed guidance is found here: <http://healthylakeswi.com>.

1. Find a location

350 ft² native plantings should begin, if possible, at the typical water's edge (i.e. Ordinary High Water Mark on a lake or the floodplain edge of a river), be at least 10 feet wide – parallel or perpendicular to the shore, and contiguous rather than planted in patches. The final shape and orientation to the water's edge are up to you. Choose an area of turf grass you wish to revert back to a more natural state or an already vegetated area you would like to augment. Try to choose a location in full or partial sun.

2. Determine soil type

It's important to understand what type of soil is in the planting location because that will determine which native plants can survive and thrive. The fact sheet links provide tools and guidance to help determine your soil type. Most of the template plans have two plant lists – one for moister soils and one for drier soils.

PROJECT TIMELINE

SITE PREP
6 WEEKS - 6 MONTHS

INSTALLATION
1-2 DAYS

MAINTENANCE
2 YEARS

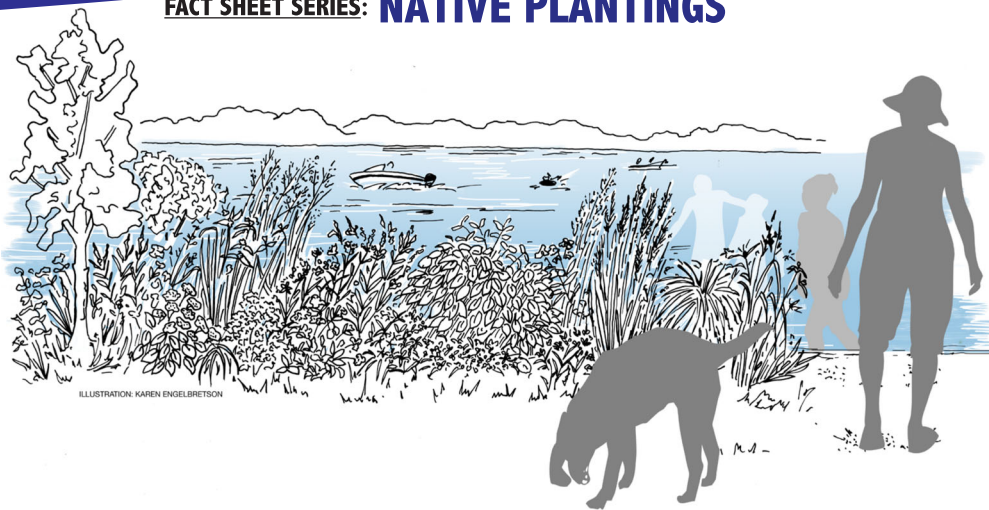
PROJECT END
3 YEARS
Ongoing weeding may be necessary in subsequent years.



FACT SHEET SERIES: NATIVE PLANTINGS

3. Choose your template and design shape

By planning your 350 ft² native planting on paper first, you will be able to create the best appearance possible and you will understand how the practice will function and fit into your landscape.

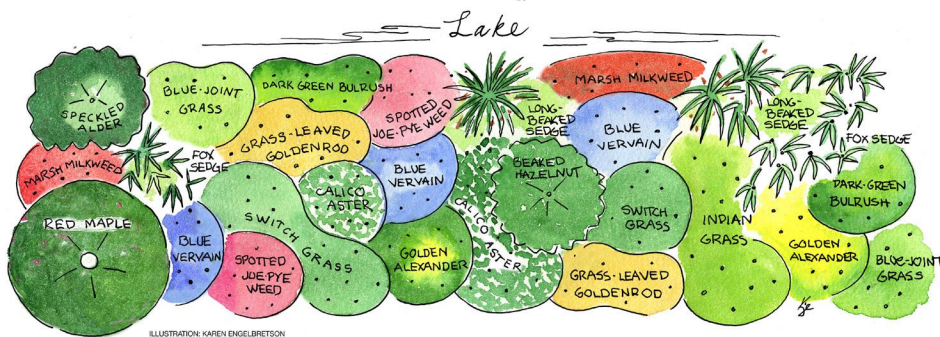


4. Choose your plant list

Native plants are used because they are best adapted for our climate and provide ideal habitat for our wildlife. The 350 ft² native planting templates include a mixture of grasses, sedges, wildflowers, ferns, shrubs, and trees, depending on the desired function and site's soil type (i.e. dry, medium, moist, or wet).

5. Lay out the planting

Lay out the shape and boundary of the 350 ft² native plantings based on your design. Before you start digging, contact <http://www.diggershotline.com/>.



6. Prepare the site

Removing lawn grass is critical to native planting success. The 2 most common ways to do so are with herbicide and black plastic. Black plastic may be preferential to herbicides, especially if you are near the water, which may require a chemical control permit for herbicide use. If you already have some native plants growing, you might consider removing weeds and planting among what is already growing. The designs provided in the fact sheet links assume you are removing lawn grasses and starting from scratch. *Site preparation, including controlling invasive species, is eligible for grant funding.* Lay mulch or wood fiber blanket down prior to planting. This will conserve moisture and reduce weed growth within the planting area. Wood chips (2 inches deep), straw, or fallen leaves (each 3-4 inches deep) may be used as mulch.

7. Plant

Follow the design specifications by placing your plants in the approximate positions described in the template plan. Step back and look at the 350 ft² native planting area. Plants should be placed about 1.5 feet apart from each other. When ready use a hand trowel, bulb planter, or bulb auger drill bit attached to an electric drill to plant them. If grant funded, the 350 ft² native planting must be in a contiguous area. In other words, the plants cannot be put into the ground in patches.

8. Water and critter-proof the plants

Good water techniques and maintenance are the keys to native planting success. Be ready to water them as soon as they are in the ground and to continue to water them daily for the first few weeks or until the plants are well established. Once plants are established, water only if prolonged dry periods occur. If grant funded, watering is required.

A temporary fence or animal deterrent sprays may be necessary in areas prone to deer browse, rabbits, and other critters. Fencing specifications are found in the 350 ft² Native Planting Best Practices Manual. If grant funded, fencing may be required depending on geographic location.

MAINTENANCE

- Water the plants a minimum of 1 inch per week and more during dry periods for 1-2 years.
- Become familiar with weeds and invasive species, in particular, and remove them frequently.
- The standing dead plants may be left in place through the winter for wildlife cover and food and then cut back when new spring growth emerges.
- Native plantings must remain in place according to local zoning specifications if within the vegetation protection area (i.e. buffer).
- The 350 ft² native planting must remain in place for 10 years if Healthy Lakes & Rivers grant-funded.

LINKS

Healthy Lakes & Rivers Website – <http://healthylakeswi.com>

Controlling Runoff and Erosion on Your Waterfront Property: A Guide for Landowners – <http://healthylakeswi.com>

350 ft² Native Planting Best Practices Manual – <http://healthylakeswi.com>

DNR Surface Water Grants – <http://dnr.wi.gov/aid/surfacewater.html>

For more information contact Patrick Goggin at 715-365-8943 or Patrick.Goggin@wisconsin.gov.



Design and layout by Amy Kowalski, Extension Lakes

Esser Insurance & Dickensen Insurance



WISCONSIN BURNING PERMITS ARE REQUIRED

WISCONSIN BURNING PERMITS

Burning permits are required by the Wisconsin DNR in many parts of the state to conduct legal and responsible burning in the outdoors. Burning permits are free and easy to obtain. They encourage the public to burn safely and are proven to be effective in protecting lives, property and natural resources from the damages of wildfires.

STEPS TO SAFE BURNING

1. **Get a permit:** Obtain a [free permit online](#) instantly with an email address. Or call the hotline 1-888-WIS-BURN (947-2876) from 7 a.m. to 10 p.m. daily to have a burning permit mailed to you.
 2. **Check before burning:** After 9 a.m. on the day you wish to burn, check the [daily burning restrictions](#) and select the county where you plan to burn. Fire conditions change quickly, so it's important to check each day you burn to find out if burning is allowed, burning hours and any size limitations.
 3. **Follow the rules:** Follow the daily burning restrictions and fire safety recommendations listed on the permit. Make sure to have all the necessary tools to keep your fire contained. Lastly, make sure your fire is completely out before leaving.
-

A Little Lake Eau Claire History

The future of Lake Eau Claire as a fishing lake is the subject of a lot of speculative talk in all sections of the community since its recent draining. Only sputtering attempts have been made on the stump clearing project which, it seems, was only partly planned previous to the lowering of the water level.

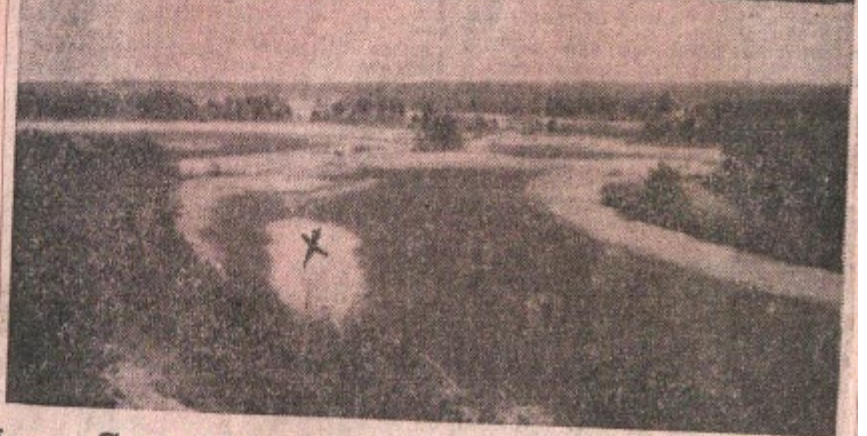
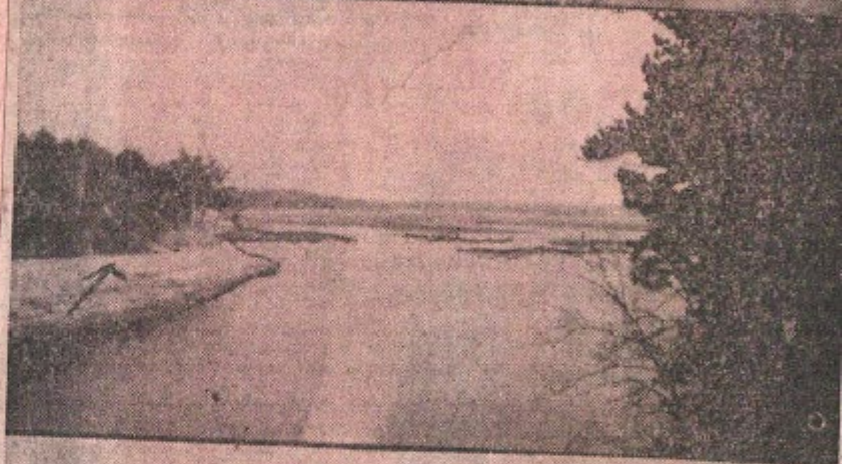
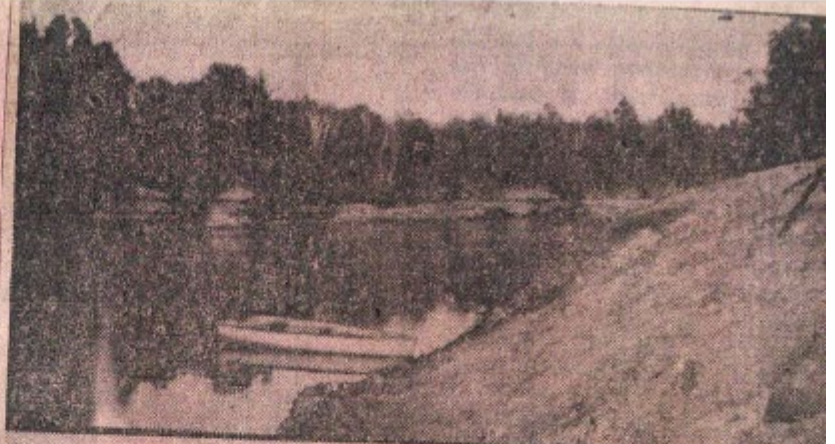
Commercial fishermen, at the present time are holding out for a 40 acre area completely clear of stumps in which they can drag nets in a carp removal attempt. The area (still undecided) will be baited with corn and the carp attracted to the feed will be netted by the fishermen. This area will provide a permanent carp removal netting area for the future.

At present, the cost and work total involved in any useful stump removal program has the sponsoring groups in a speculative whirl.

Time passes and winter is coming. Something will have to be done before the freeze up.

The photos above show the condition of the lake at the present time. Upper photo shows the gorge area of the lake above the dam, (arrow points to normal level of lake). Middle photo shows the lake immediately east where it widens above the dam gorge. Dark areas are sand and mud flats. Bottom photo shows the condition of the shallow sloughs which make up a large part of the lake area. (area marked with cross is water, balance is mud and sand.)

Carp are given the blame for the absence of vegetation on the lake bottom, but the question has been raised as to whether there ever was any lake bottom vegetation. It is evident now that a more thorough study of the lake should have been made before the present project was attempted.



Area Speculates On Lake Eau Claire



Chuck Haldeman
Design Specialist

C 715.491.8869

O 800.795.1204

E charles@american-waterworks.com



- Basement Waterproofing
- Basement Wall Straightening
- Concrete Leveling
- Foundation Repair
- Radon Testing & Mitigation
- Crawl Space Encapsulation

Are you up for a Challenge?!?!



As a non-profit organization, we are membership driven and rely on those who love Lake Eau Claire to make our lake better! We know there are many who use Lake Eau Claire for various reasons, and we believe they would benefit from becoming members! So, our challenge to you... recruit at least **one** new member to join the Friends of Lake Eau Claire.

Think of family, friends, fishing buddy, hunting partner or anyone who's interested in helping join our efforts to continually improve Lake Eau Claire! Everyone is welcome, you don't need to own a property on the lake to be a member!! Join today: <https://www.memberplanet.com/lakeeauclaireassociation>



Membership for the Friends of Lake Eau Claire is only \$25 per year. As you can imagine, the Lake Association has many expenses during the year. Your membership fee helps pay for things like equipment repairs, website hosting and maintenance, postage and other mailing expenses, newsletter printing, and a host of other things. The dues received are put to good use and spent very wisely. In addition to all that the Lake Association provides today; Friends of Lake Eau Claire

members will now have the opportunity to be enrolled in a texting service that we can utilize during emergency situations. Given the flooding that occurs often, we believe we need multiple options for notifying people of emergency situations and important announcements. This service will **ONLY** be available to members who are up to date on their membership dues. You can renew your membership or join today by going to the following link, <https://www.memberplanet.com/lakeeauclaireassociation>, click the “Join our group” button and fill out the form to “Create an account”. You can also join by mailing your payment to: Lake Eau Claire Association, PO Box 229, Augusta, WI 54722.

Lake Eau Claire Membership Dues Renewal/Application

Name:			
Street Address:			
City, State, Zip:			
Email:			
Phone:			
Annual Membership Dues: circle one			
One Year	\$ 25.00	Three Years	\$ 75.00
Two Years	\$ 50.00	Four Years	\$100.00
Additional Donation:			
Fireworks	\$		
Lake Rehab	\$		
Other Donation	\$		
Total	\$		

Note: Donations to the LECA are tax deductible.

Payment options:

Member Planet Online Payment Options:

Memberships: You can renew your membership or join today by going to the following link, <https://www.memberplanet.com/lakeeauclaireassociation>, click the “Join our group” button and fill out the form to “Create an account”.

Donations: <https://www.memberplanet.com/campaign/lakeeauclaireassociation/donations>

Mail completed form with check made out to Lake Eau Claire Association to the following address:

Lake Eau Claire Association

Attn: Jill Weisenbeck

PO Box 229

Augusta, Wisconsin 54722 – 0229

Thank You Northern Level (\$200) Sponsors!



Thank You Walleye Level (\$100) Sponsors!



FISHERMAN FRED'S
GUIDE SERVICE
(H) 715.286.9413
(C) 715.514.7365
fredposs@gmail.com



Your Touchstone Energy® Partner 